

**TATA STEEL**  
WeAlsoMakeTomorrow




# NESTUDIO

ENVISION  
BETTER LIVING



Open doors to a whole new world  
of optimized space, comfort and security

ENVISION  
BETTER LIVING

The image shows a modern architectural structure. In the foreground, there is a wooden deck made of horizontal planks. To the right, a wall with a textured, stone-like finish is visible. In the background, a long, low structure with vertical slats or panels stretches across the horizon. The sky is a clear, bright blue with some light clouds. A dark brown rectangular box is overlaid on the left side of the image, containing white text.

With Nestudio, the newest range of Tata Steel's prefabricated modular solutions, you can now extend your living or work space with a designer structure. It ensures maximum comfort and hassle-free installation, providing exteriors and interiors with a premium finish.

Today, with space being a major constraint, there is a huge need for space utilization. Nestudio fulfills this need with exquisite and tasteful designs which are not just sturdy but stylish too.





REDEFINING  
YOUR LIFESTYLE



## ABOUT **Nest-In**

Nest-In is Tata Steel's smart steel based modular construction solution. With its pan-India presence, and highly efficient delivery mechanism, Nest-In strives to provide complete turnkey solutions with a unique customer experience at its core. It is suitable for various applications like pre-fab housing, steel based modular toilets, portable cabins, security cabins, water kiosks etc.

The offerings of Nest-In are geared towards meeting existing and upcoming requirements under various government initiatives like Swacch Bharat program, Smart City initiatives and CSR initiatives of various corporates. Apart from these, Nest-In has a basket of offerings which caters to various light weight pre-fabricated construction solution requirements for projects and industries.





# Why Nestudio?

- Move-in to your dream space in 4 weeks!
- Equipped with branded fittings and accessories
- Value for your money
- Low maintenance structure
- Eco-friendly and sturdy construction
- Reusable steel structure



## Applications

### Housing:

- Rooftop house
- Farm house
- Gym/Activity room
- Study room

### Commercial:

- House office
- Conference room
- Resorts and Cottages
- Kiosks



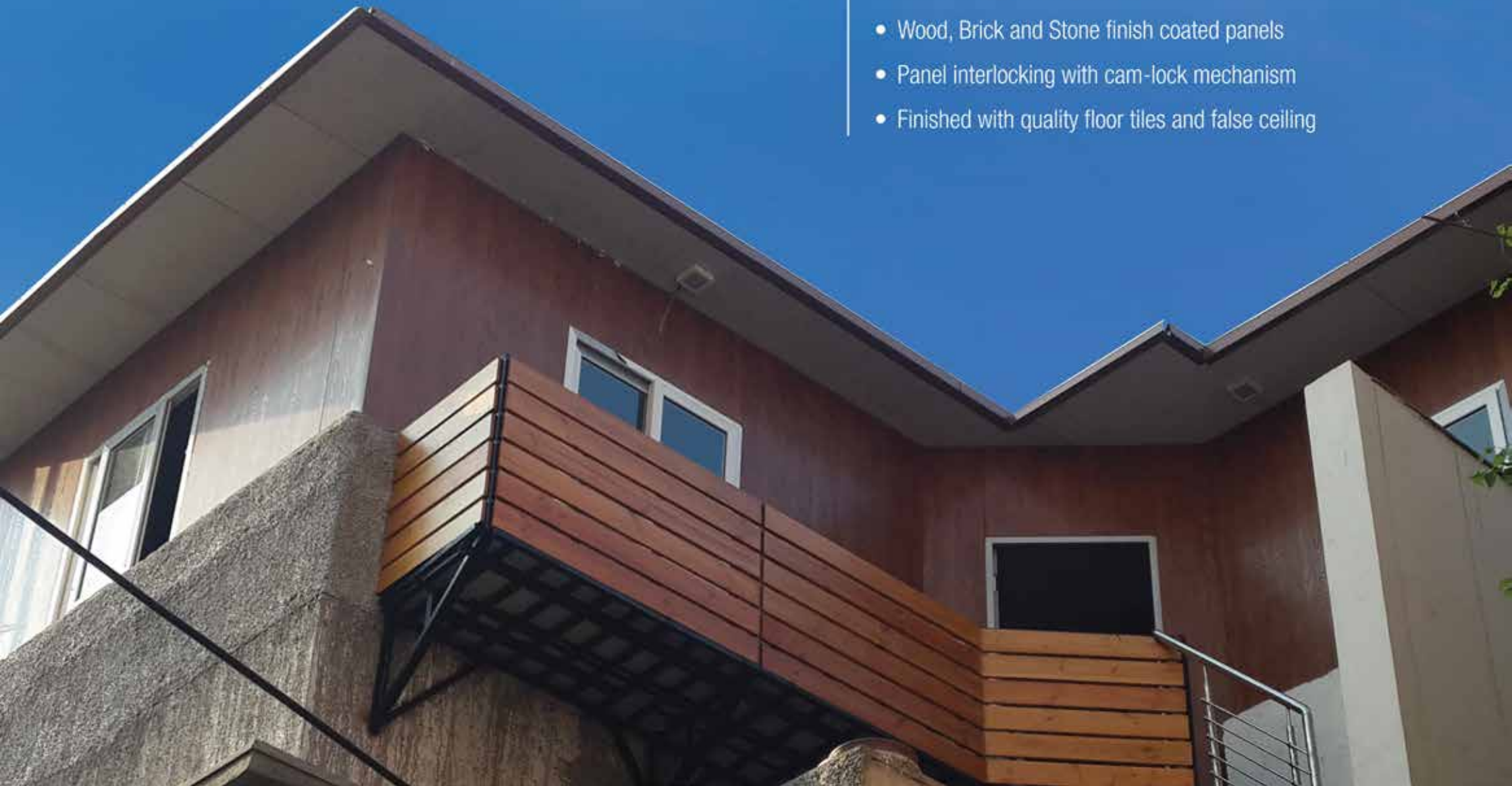


# Features

- Fast and hassle free construction
- Within load bearing capacity of your existing roof
- Premium exterior and interior finish with designer finish steel
- Insulated panels for better ambient conditions
- High quality doors and windows
- Fire retardant and termite proof
- Option for air conditioning, designer lighting etc.
- One stop solution (includes Plumbing, Electrical and Civil work)

# Technical Details

- 50 mm insulated PUF walls
- 40-70 mm sloped PUF roof
- 4 layer coated steel with 120 GSM galvanization
- Concealed plumbing and electrical connections
- Wood, Brick and Stone finish coated panels
- Panel interlocking with cam-lock mechanism
- Finished with quality floor tiles and false ceiling





# 2BHK

Luxurious living spaces created with an elegant design which ingeniously combines two bedrooms, bathrooms, living-area and kitchen.





# 1BHK

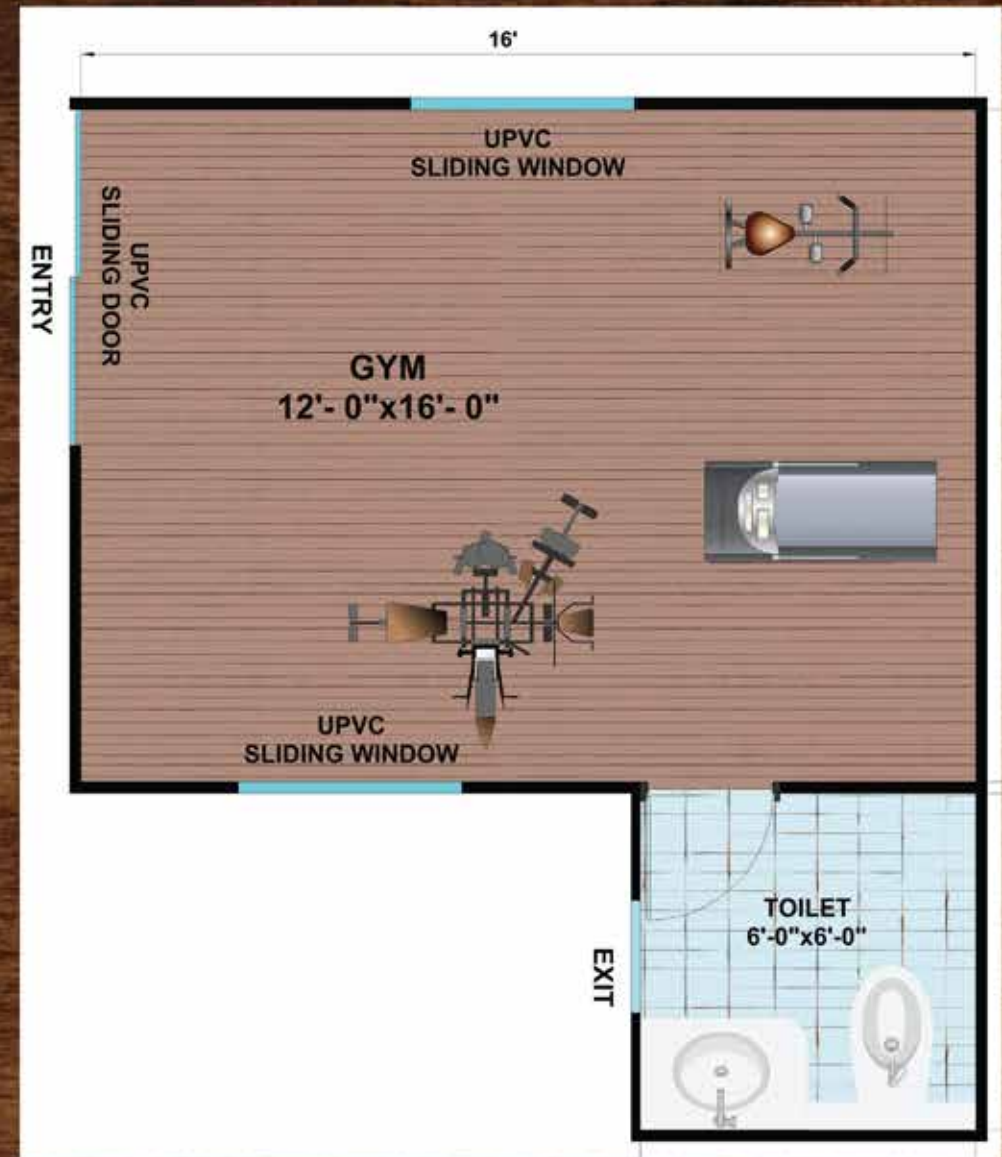
A beautiful cottage house with a bedroom, bathroom and kitchen. Small but elegant, this is ideal for individual comfort living.





# Hall with Bathroom + Gym

Customizable living spaces with a spacious hall and fully functional bathroom can be converted into customized living spaces like guest-houses, gyms, puja-rooms etc.

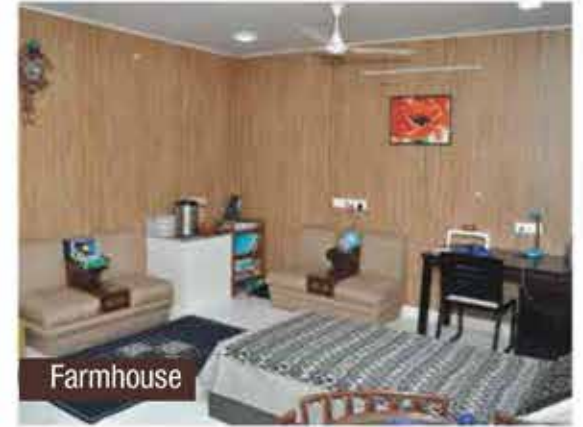




**YOUR OWN  
DESIGNER SPACE**



Conference room



Farmhouse



1 BHK



Cottages



Study Room



Scan to view  
more projects





Visit: [www.nestin.co.in](http://www.nestin.co.in)

15th Floor, 43, Jawaharlal Nehru Road, Kolkata - 700071  
Mail at: [nest-in@tatasteel.com](mailto:nest-in@tatasteel.com) | Toll free no. 1800-108-8282